

TENDER DOCUMENTS
NIT- 06/2024

FOR

Renovation of Washrooms.

AT

INTERNATIONAL CENTRE FOR GENETIC ENGINEERING & BIOTECHNOLOGY (ICGEB)

Aruna Asaf Ali Marg, New Delhi – 110067

Website: www.icgeb.res.in

INDEX

Sl. No.	Item	Page No.
1.	Tender notice	3
2.	Minimum Eligibility Criteria	5
3.	General terms and condition for submission of bid	6
4.	Scope of work	11
5.	Terms of Payment	13
6	General terms and condition relating to works	15
7.	Technical Specification	17
8.	Approved Makes of Materials	18
9.	Annexures for Technical bid	19
	A Technical Bid Form	20
	B Undertaking declaration	22
	C Site visit certificate	23
10.	Price bid	24

(1)

TENDER NOTICE

INTRODUCTORY NOTE:

ICGEB is an international organization dedicated to advanced research and training in molecular biology and biotechnology, with special regard to the need of the developing world. ICGEB, New Delhi Component has been given privileges and immunities as for other UN Organizations in India vide Government of India's gazette notification no. 216, SO 403(E) dated 12 April 1988.

ICGEB invites sealed Bids to meet the immediate requirement for "Renovation of Washrooms"
Interested & competent firm/individual may download the Bid documents from ICGEB website

IMPORTANT INFORMATION

Name of Work	Renovation of Washrooms.
Tender No.	NIT – 06/2024.
Earnest Money Deposit (EMD) & Tender Fee	EMD of Rs. 45,000/- (Forty Five Thousand Rupees only) & Tender Fee of Rs 2,000/-(Two Thousand Rupees only) in the form of separate demand draft to be drawn in favour of International Centre for Genetic Engineering & Biotechnology payable at New Delhi.
Distribution of Tender Document	To be downloaded from the website of the ICGEB http://www.icgeb.res.in/ndinfo.htm
Last Date and time for Bid Submission	7 th June, 2024 till 3.00 PM
Address at which Bid is to be submitted	Should be dropped in the tender box at the reception of International Centre for Genetic Engineering & Biotechnology, Aruna Asaf Ali Marg, and New Delhi – 110067.
Date, Time & Place of opening of the Technical Bid	7 th June, 2024 at 4:15 PM, ICGEB
Date, Time & Place of opening of the Financial Bid	Technically qualified bidders will be called for financial bid opening
Method of selection	Both “Technical” and “Price” bid should be in separate envelops and then put in to one common envelope, super scribing the name of the work and tender opening date etc. The Financial Proposals of the Firms/Individuals that qualify the Technical Evaluation will only be opened. Further, the Firm/Individual having the least quote (L1) in its financial proposal will be awarded the contract if the price bid is found to be in order.

(2)

MINIMUM ELIGIBILITY CRITERIA

The bidder should meet the following Eligibility Criteria and must submit documentary evidence in support of their claim for fulfilling the criteria and they should submit an undertaking on their official letterheads to the fairness of these documents while submitting the bid. The bids received without the documentary evidence will be rejected outright.

1. The bidder should have an address in Delhi/NCR.
2. Copies of the work order and completion certificate successfully executed for similar kind of work (Civil Related work) during the last 7 years for reputed Public Ltd. Companies, Public sector, Govt. Institutions and autonomous bodies in the following manner.
 - A. The Bidder should have successfully completed one single assignment of similar kind of work for Rs. 18,00,000/- **OR**
 - B. Two similar work of Rs. 11,25,000/- each. **OR**
 - C. Three Similar work of Rs. 9,00,000/- each.
3. The bidder should have valid GST/TIN, registration certificates from relevant authorities (provide latest receipts/challans for documentary evidence).
4. The bidder should submit PAN number with documentary evidence
5. The Company / Firm / Individual, any Partners of the firm should not be black listed by any PSU or Government departments/ UN or its agencies/ institutions/ private organisations in respect of any assignments or behaviour of any Partner/ employee. The firm / Individual will provide an undertaking that such Partner/ employee will not be involved in the said contract, directly or indirectly.
6. An undertaking should be submitted that there are no legal suits / criminal cases pending against the Firm and its Proprietor/Partners or having not been earlier convicted on grounds of moral turpitude or for violation of laws in force.

(3)

GENERAL TERMS AND CONDITIONS FOR SUBMISSION OF THE BID

Note: Bidders must read these conditions carefully and comply strictly while submitting their bids.

1. PREPARATION AND SUBMISSION OF THE BID DOCUMENT:

The Bidder is expected to examine all instructions, forms, terms & conditions and specifications stated in the Bid Documents. Failure to furnish all information required in the Bid Document or submission of a Bid not substantially responding to the Bid Documents in every respect will be at the Bidder's risk and may result in the rejection of the Bid. The following sections of the Bid Documents must be completed and submitted by the Bidder:

2. TECHNICAL BID should contain the following:

Note: All the Annexures to be filled properly and neatly.

- a. Technical Bid Form. (Annexure-A)
- b. Certificate of registration (GST, PAN).
- c. Documentary evidence for minimum qualifying criteria.
- d. Tender Fee of Rs. 2,000/-.
- e. EMD DD of Rs. 45,000/-
- f. Undertakings / declaration certificates (Annexure -B)
- g. Complete Tender document (except price bid) duly sign and stamp on each page as a token of acceptance
- h. Site Visit certificate (Annexure C)

3. FINANCIAL / PRICE BID:

In this bid the bidder is required to quote his items rates/prices for the works mentioned in the scope of work & technical specifications. The rates/price should be inclusive of all material cost, labour, services, charges for the plant/machinery/tools & tackles required for work, freight, Insurance, Govt. duties, excluding GST. If the tax rates are not shown separately, it will be deemed to be included in the quoted price and dealt with, accordingly.

Quoted rates will be deemed to cover all the items & works which may be required for completeness and functioning of total system, even though they may not have been explicitly mentioned in the scope and schedule of works.

No charges towards price escalation, site difficulties shall be payable extra or separately. It is mandatory on bidder to quote all items rate as asked for in the BOQ/ PRICE schedule. Failure to adhere to this condition will lead to rejection of tender.

4. EARNEST MONEY DEPOSIT & TENDER FEE:

Earnest money deposit amount equivalent to Rs. 45,000/- (Forty Five Thousand Rupees only) & Tender Fee of Rs 2,000/- (Two Thousand Rupees only) in the form of DD issued by any Commercial Bank in favour of International Centre for Genetic Engineering & Biotechnology payable at New Delhi must accompany the Technical Bid. The E.M.D. of successful bidder shall be released after submission of performance guarantee by him. Bids not accompanied by E.M.D. shall be rejected. E.M.D. of unsuccessful Bidders will be returned as early as possible. The E.M.D. shall be forfeited if a Bidder withdraws its Bid during the period of validity of the tender.

5. PERIOD OF VALIDITY. Bids shall remain valid for **180 days** after last date for bid submission prescribed by ICGEB which may be extended with mutually agreed terms. A bid valid for a shorter period may be rejected by ICGEB as non-responsive.

6. SITE VISIT:

Interested Bidders may visit the ICGEB Campus before submission of the bid. For site visit, please contact Mr. Naresh Chand Dabral Component In-charge, Tel: 26741358, 26742357, Email ID: ncdabral@icgeb.res.in on any working day (Monday to Friday) between 10:00 to 17:00 hours.

7. SITE CONDITION: Before quoting, the contractor must visit the site to inspect the work and shall fully acquaint himself about the conditions and scope of work with regard to accessibility of site required for the satisfactory execution of work along with site visit certificate No compensation on account of any site difficulties will be entertained, at a later date, after award of the works.

8. Tender Rejection: ICGEB reserves the right to reject any or all the tenders in full or in part without assigning any reasons whatsoever, and the decision of the centre in this regard will be binding on all the bidders. Tenders not complying with any of the provisions stated in this tender document are liable to be rejected. Director, ICGEB reserves the right to accept or reject any tender without assigning any reason and does not bind himself to accept the lowest tender.

9. FORMAT AND PREPARATION OF THE BID:

1. The Bidder shall prepare the Technical Bid and Financial Bid and place them in two separate sealed covers, clearly marking each as “Technical Bid” and “Financial Bid”. Name of firm / proprietor, address & contact no. should be mentioned clearly on both the envelopes. These should further be placed in a large size envelope with the same information on it. Both Technical & Financial Bids, along with documents required to be submitted, shall be signed by the Bidder and a person duly authorized by the Bidder to, on each page. Written power of attorney accompanying the Bid shall indicate necessary authorization. Any correction in the Bid shall be initiated by the person signing the Bid.
2. All entries in the Application form should be legible and filled clearly. If the space for furnishing information is insufficient, a separate sheet duly signed by the authorized signatory may be attached.
3. No deviations in respect of NIT conditions are acceptable.
4. ICGEB reserves the right to visit the working sites mentioned by bidders as proof of experience to ascertain the quality of service rendered. The bidder will have to arrange for such visit.

10. SUBMISSION OF BID:

The Bid in two parts, one containing the Technical Bid and the other containing the Financial Bid shall be placed in two separate sealed envelopes clearly marked as below:

- i. "Bid for Renovation of Washrooms - Technical Bid"
- ii. "Bid for Renovation of Washrooms - Financial Bid"

The sealed envelope having the Technical Bid shall contain the Technical Bid Form, Declaration Certificates, Demand drafts for Tender fee and E.M.D, documents establishing eligibility of offered services and a complete set of the Bid Document stamped & signed on all the pages etc.

The other sealed envelope will contain the Financial Bid which shall include Schedule of Rates.

Both the sealed envelopes containing the Technical Bid and Financial Bid separately, shall be placed in an outer envelope dully sealed, marking the outer envelope as “Renovation of Washrooms”. The Bid shall be dropped in the tender box at the reception of, ICGEB, Aruna Asaf Ali Marg, New Delhi – 110 067.

If the cover containing the Bid documents is not sealed and marked as instructed above, no responsibility will be assumed for any misplacement of the Bid or beforetime opening of the envelope.

11. IMPORTANT NOTE:

1. Bid received through email and/or after the scheduled date and time will not be accepted.
2. ICGEB reserves the right to accept any or reject all the tenders without assigning any reason thereof.
3. Selection will be done on competitive basis. Canvassing in any manner shall lead to disqualification of the Firm / Individual.

12. BID OPENING

All the Technical Bids shall be opened publicly in the presence of the Bidders or their representatives in front of the Bid Evaluation Committee. Bidders' name, documents with presence and absence of Bid security, period of Bid validity and such other items will be announced and recorded at the time of opening of the Technical Bid by the Bid Evaluation Committee. The Financial Bids of Technically Responsive Bidders will be opened in the presence of such responsive Bidders or their representatives on date and time to be notified later. Total Bid amount will be announced and recorded at the opening of the Financial Bid. Minutes of the Bid Opening containing summary of information with regard to each Bid shall be prepared during the opening of both Technical & Financial Bids.

13. EVALUATION OF BIDS:

1. For proper evaluation & comparison of Bids, the Bid Evaluation Committee, may at its discretion, ask the Bidder for any clarification of the Bid. The request for clarification and the response shall be in writing, but no changes in the price of the Bids shall be offered or permitted.
2. The technical bids will be evaluated by the Bid Evaluation Committee on the basis of experience in similar organizations, resources available with the firm/ Individual, visit of the Committee to the site where the contractor is currently handling similar work etc.
3. The Bid Evaluation Committee will first evaluate the Technical Bids to determine the substantial responsiveness of the Technical Bids. Substantial Responsive Bid is one which conforms to all the terms and conditions as indicated in the Bid Document and which also establishes Bidder's qualification to deliver the services according to technical specifications. After the evaluation of all the Technical Bids, Financial Bids corresponding to only substantial responsive Technical Bids will be taken up for evaluation.
4. All non-substantial Technical Bids will be rejected as non-responsive and corresponding Financial Bids shall be excluded from further evaluation.
5. The Bid Evaluation Committee, may at its discretion, decide to waive off any minor non conformity in a Bid which does not constitute a material deviation with regard to services and pricing.

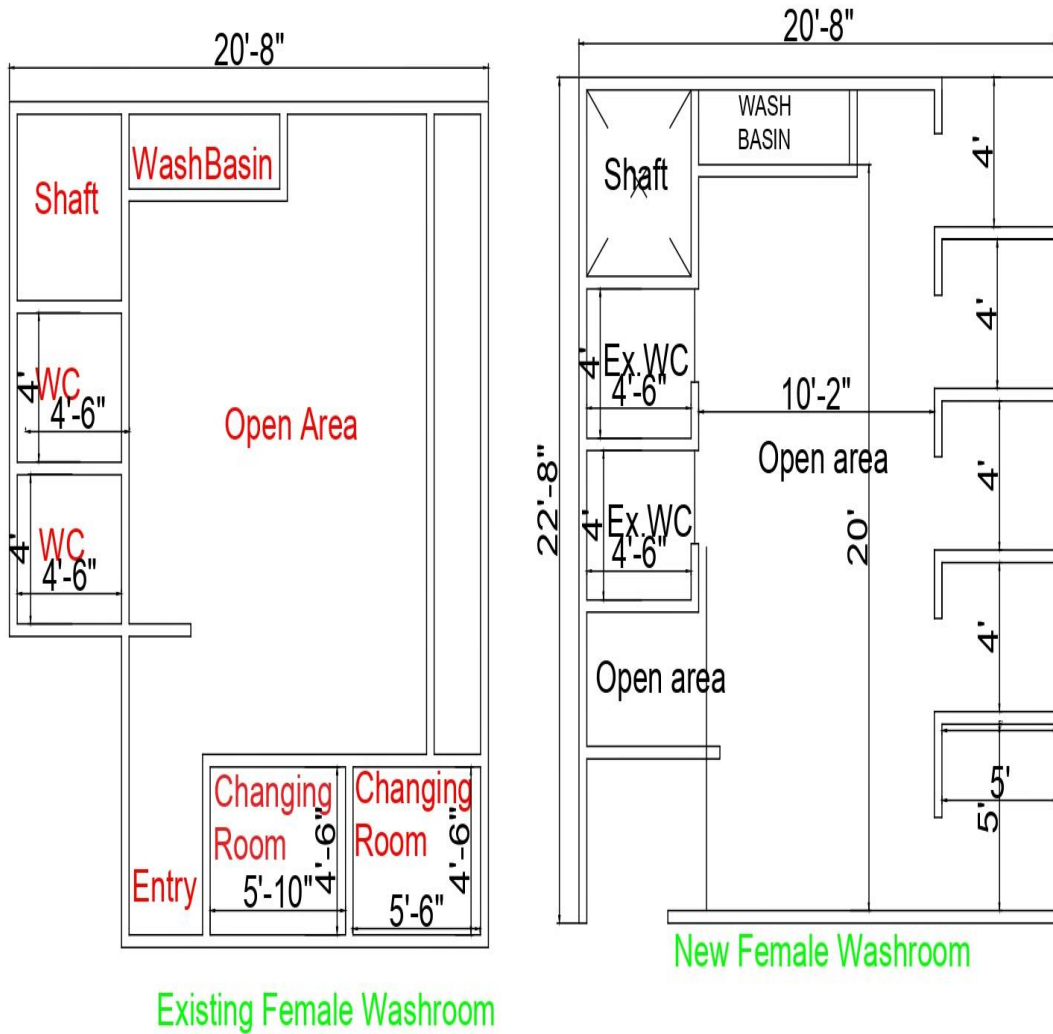
6. While evaluating Financial Bids, if there is any discrepancy between the unit price and the total price, unit price will prevail and total price shall be corrected. However, if the Bidder does not accept the correctness of the errors, his Bid will be rejected.
7. The Bidder must have supplied the information required in the Bid document. A Bidder not fulfilling any criteria stipulated, his Bid will be considered non responsive and may be rejected.
8. The Bidders who have duly complied with the Eligibility Criteria will be eligible for further processing.
9. The successful bidders of the Technical Bids will qualify for opening of the Financial Bids.
The Bids which have been established as responsive in all respects will be compared for its price competitiveness. On the basis of technical and financial evaluation, substantially responsive and most advantageous Bid will be considered for the award of contract for Renovation of Washrooms.
14. **THE BIDDER IS EXPECTED TO EXAMINE ALL INSTRUCTIONS**, forms, terms and conditions in the bidding documents. Failure to furnish all information required in the bidding documents or submitting a Bid not substantially responsive to the bidding documents in any respect may result in the rejection of the Bid.
15. **THE BIDDER SHALL BEAR ALL THE COSTS** associated with the preparation and submission of its bid, and ICGEB in no case will be responsible or liable for these costs, regardless of the conduct or outcome of the bidding process.
16. **PROFESSIONAL EXCELLENCE AND ETHICS**: ICGEB requires that all Bidders participating in this Bid adhere to the highest ethical standards, both during the selection process and throughout the execution of the contract.
17. **FAILURE OF THE SUCCESSFUL BIDDER** to comply with all the requirements shall constitute sufficient grounds for the annulment of the award, in which event ICGEB may make the award to the next lowest evaluated bidder or call for new bids.
18. **THE TENDERING AUTHORITY RESERVES THE RIGHT TO ACCEPT ANY BID** not necessarily the lowest, reject any bid without assigning any reasons for entering into the Rate Contract.
19. **CONDITIONAL BIDS**: If a bidder imposes conditions, which is in addition to or in conflict with the conditions mentioned herein, his bid is liable to be summarily rejected.
20. The Director, ICGEB reserves the right to cancel any or all the tenders without assigning any reason.
21. Tender once submitted will remain with ICGEB and will never be returned to the bidders.
- 22. ARBITRATION/RESOLUTION OF AND JURISDICTION**
Any dispute arising out of this contract will be in accordance with the principle of international laws.

(4)

Scope of Work

Scope of work is Renovation of Washrooms in accordance with Drawing No. ICGEB/CIVIL/02/2024 (attached herewith), Bill of Quantities (attached) in price Bid and Technical specification.

Lab Side G.F Female Washroom



(5)

TERMS OF PAYMENT

1. **Escalation:** No escalation over and above items rates quoted by the bidder shall be paid during the execution of contract due to whatsoever reasons.
2. **Performance Guarantee @ 5%** shall be deposited to the department on the work order amount by the agency within a period of 15 days from the date of issue of LOI (work order) before commencement of work. Performance guaranty shall only be acceptable in the form of bank guarantee /DD and it will be returned after successful completion of work. (Date of completion certificate issued by ICGEB)

If tenderer fails to deposit the said performance security within the period as indicated, the Earnest Money deposited by the tenderer shall be forfeited automatically without any notice to the tenderer and without prejudice to any other right or remedy. Performance Bank guarantee shall be valid for entire contract period and two extra months. In case of con-tract extension with or without LD the validity of BG shall also be extended for the extended period with additional two months.

- **FORFEITURE:** Performance Bank guarantee shall contain a statement that it shall be automatically and unconditionally forfeited without recourse and payable against the presentation by ICGEB to the relevant company/ correspondent bank, as the case may be, together with a simple statement that tenderer has failed to com- ply with any term or condition set forth in the Contract.
 - **RELEASE:** Performance Bank guarantee will be released without interest on successful taking over of the project by ICGEB on receipt of written request from tenderer.
3. **Security deposit of 10%** will be deducted from the Contractors bills and same will be released after successful expiry of defect liability of 12 months from date of completion of Work.
 4. **Payment of bills:**
100 % payments after satisfactory completions of work.
 5. **Extra Items:** - During the execution of work, the contractor may require to execute certain additional/extra items in order to complete the job/works beyond the BOQ for which no rates are available. The payment for such extra/deviated items shall be paid as per rate approved on the basis of analysis. The cost component for rate analysis shall be (i) cost of material (ii) cost of direct labour (iii) Contractor over heads & profit 10%. Before execution of extra work, the rate analysis may be forwarded to ICGEB for approval of the Director, ICGEB. However, the extra items amount should not exceed 10% of the total contract value including all taxes.

6. **Guarantee/Defect Liability Period:** The contractor should guarantee for the works / items executed by him against the bad material / workmanship for a period of one year from the date of acceptance by ICGEB. During this period if any replacement of items and/or repairs / rectification is needed, the same should be replaced / repaired free of cost to ICGE
7. **Liquidated Damage:** In case the work is delayed beyond the specified completion period for reasons attributed to the contractor, deductions on account of Liquidated damages @ 1 % of the contract value per week will be deducted subject to a maximum of 10% of the total contract value excluding GST. However, in case the works are delayed beyond the schedule completion/contract period, ICGEB reserves the right to get the work done by any other contractor at the risk and cost of the contractor and amount to this affect along with 10% over heads will be deductible from his bills/dues.
8. Rates quoted by bidder in 'Price Bid' will be item rates i.e. will be all inclusive including material, labour, cartage, tools, tackles, all access ladders & scaffolding, (all taxes excluding GST), Contractors overhead profit and all other expenses not specifically mentioned but reasonably implied.

(6)

GENERAL TERMS AND CONDITIONS RELATING TO WORKS

1. **Completion Time:** Time limit for completion of the work is 75 days from the date of the order issued. The time shall be the essence of this contract and entire work as titled above is to be completed in all respects within the given time from the date of issue of work order. The successful bidder has to submit the time & activity chart for the completion of work.

Under the force-major conditions or delay due to reasons beyond control of the contractor, ICGEB may grant suitable time extension for which the contractor has to request along with the justification/ reasons well in advance to the Director, ICGEB for approval without any prejudice to price escalation. No time extension request shall be considered after the expiry of completion period of contract. The decision of the Director will be final and binding on the bidder/contractor.

2. Kindly note that payment shall be made as per the actual quantities executed and not on the basis of materials supplied. The final payment will only be made on the basis of the actual work quantities executed and for this a joint measurement by ICGEB and the contractor will have to be taken. The responsibility and the facilitation for taking the measurements will rest with the contractor.
3. The Work shall be done as per schedule of items, specification terms and conditions and instruction of Engineer-in-charge on as and when required basis.
4. The rates shall be inclusive of cartage/ loading unloading or any other expenses. GST should be clearly shown separately. Rate must be valid and firm for a period of one year from the date of award of contract/Letter.
5. Inferior and Poor quality material shall not be accepted and contractor will redo such works
6. The contractor will have to undertake responsibility of accidents etc. for his persons working on site.
7. The Contractor shall clean the site after completion of work before submission of final bill. Any dismantled material shall be stacked in designated place as instructed by the Engineer-in-charge.
8. Charges for scaffolding or jhula if any, will be considered included in the quoted rates and no extra amount will be paid on this account.
9. Measurement shall be taken jointly by the Engineer-in-Charge or his authorized representative and by the contractor or his authorized representative.

- 10.** All materials brought at site shall be got approved from the Engineer in charge before incorporation.
- 11.** Contractor shall carry out the various tests as enumerated in CPWD/BIS specification at his own cost.
- 12.** Quantities are indicative and likely to vary. Bidder will have no objection for variation in quantities thereon. Payment will be as per actual work executed. 10%±deviation in quantities would be permitted.
- 13.** In case the bidder withdraws his offer within the validity of tender or contractor fails to work as per contract terms & conditions specifications after issue of the award letter, the earnest money will be forfeited. Other suitable administrative punitive action may also be imposed as deemed fit.
- 14.** Contractor should depute a qualified supervisor dedicated for this site, who will co-ordinate work and interact with the ICGEB representative responsible for supervision of work. Without a Supervisor, work will not be allowed. All the persons deployed at ICGEB site should carry valid gate-passes. Any negligence/offence on their part will attract immediate removal from site.
- 15.** The contractor will provide all necessary materials, tools, equipment, measuring instruments and working consumables etc., needed for execution of the works. Safe custody of all such material will be contractor's sole responsibility. No extra charges will be paid for the same.
- 16.** Watch and Ward of all material till the system is taken over by ICGEB shall be the sole responsibility of the contractor and pilferage etc. shall be entirely to his account.
- 17.** During execution of work, the contractor should follow all standard norms of safety measures / precautions to avoid accidents / damages to man, machines and buildings. On non-adherence of this clause, suitable fines as decided by the Director, ICGEB shall be imposed.
- 18.** Challan: No material belonging to the contractor whether consumable or non-consumable should be brought inside the ICGEB campus without proper entry at the main gate nor any material should be taken out without proper gate pass issued by the ICGEB. List of all inwards / outwards challan to be maintained by the contractor with a copy marked to ICGEB.
- 19.** ICGEB will provide free water and electricity during Renovation of Washrooms. The contractor has to make his own arrangements for distribution of power and water from that point as per his requirements.
- 20.** Termination of Contract: The Director, ICGEB reserves the right to terminate the contract on account of poor workmanship, failure to mobilise the site within 30 days, non-compliance of set norms/ specifications for the works, delay in progress of work, violation of any contract provisions by the contractor. In such case the contractor is liable to pay liquidated damages @ 10% of tendered value besides for failure of EMD.

(7)

Technical Specifications

Technical Specifications of for each item of work will be in accordance with relevant IS codes and CPWD specifications unless noted otherwise.

(8)

APPROVED MAKES OF MATERIALS

- 1. SANITARY WARE – CERA, JAQUAR**
- 2. BATHROOM FITTINGS - JAQUAR, HIND WARE / CERA**
- 3. CPVC –ASTRAL, SUPREME**
- 4. PVC PIPES FITTINGS – SUPREME, ASTRAL**
- 5. TILES - KAJARIA, SOMANY.**
- 6 ELECTRICAL ITEMS – HAVELLS, FINOLEX, V-GUARD.**
- 7. HAND DRIER- EURONICS, JAQUAR**
- 8. SOAP DISPENCER- EURONICS, JAQUAR**
- 9. PAINT – ASIAN PAINT, BURGER**
- 10. DOOR – TATA, JSW AVANTE**
- 11. ALUMINIUM – JINDAL, TATA**

(9)

ANNEXURES FOR TECHNICAL BID

Note: All the Annexures should be filled properly and neatly.

Annexure-A

Technical Bid Form

S. No.	Description.	Fill the detail	Page No. of documentary
1.	Name of Agency.		
2.	Name of the Contractor (Firm/Individual) and Contact Person.		
3.	Date of Incorporation of the Firm		
4.	Whether Proprietary / Partnership		
5	Office Address in Delhi NCR, Tel. Nos and Email ID:		
6	GST Registration details (with documentary evidence)		
7	PAN No. (with documentary evidence)		
8	One similar work of value not less than Rs 18,00,000/-.	1. Work order No. Date: Rs.	
9	Two similar works, each of value not less than Rs. 11,25,000 each.	1. Work order No. Date: Rs. 2. Work order No. Date: Rs.	

10	Three Similar works each of value not less than Rs. 9,00,000 each.	1. Work order No. Date: Rs. 2. Work order No. Date: Rs. 3. Work order No. Date: Rs.	
11	Completion certificate, if fully executed.		
12	Signed and stamped Tender document		
13	Tender Fee		
14	Earnest Money Deposit		
15	Undertaking for not black listed		
16	Site visit acceptance certificate (signed and stamped)		

Authorised Signatory
Name & Address of the firm with seal

UNDERTAKING/DECLARATION FOR NOT BEING BLACK LISTED

Date.....

To,
The Administrative Officer
International Centre for Genetic Engineering & Biotechnology
ArunaAsaf Ali Marg
New Delhi – 110 067.

Dear Sir,

I / We hereby confirm that our firm has not been banned or Blacklisted by any government organizations/Institutions/Court/Public sector Units/Private organization. Further it is certified that there is no police case pending against our firm/partner relating to previous service contracts.

Authorised Signatory
Name & Address of the firm with seal

This certificate shall be furnished duly signed & stamped with Techno-commercial Bid.

Site Visit Certificate/ Undertaking

This is to certify that we have visited the site for work of **Renovation of Washrooms on** and assessed the actual situation & nature of site. We have also assessed the amount of work involved at site for tendered work before submitting our offer. We will be able to complete the above work within stipulated time as per site conditions.

We further undertake that no extra cost will be claimed by us later-on for any difficulties/ modifications involved during the execution of tendered works. We understand that work is to be executed in an already operational/ functional institute.

Component In-Charge
ICGEB New Delhi

Authorised Signatory
Name & Address of the firm with seal

(10)

PRICE BID

PRICE BID (Schedule of Rate)

Name of Work: Renovation of Washrooms.

ANNEXURE-1

Name of Work: Renovation Washroom (Gents) G.F Lab side Admin Block in ICGEB.

S.no	Description of item	Qty	Unit	Rate	Amount
A	CIVIL WORK				
1	Dismantling of Bathroom Fittings including Sanitary items, Faucets, Wash Basins, Closets/ Flush Cisterns, Urinals Aluminum window , doors etc. and stacking of useful material within a specified distance & disposal of unserviceable material.	1	JOB		
2	Dismantling of Brick, PCC, R.C.C & Any floor tiles and wall tiles including removing of door & windows cleaning and making the good with cement plaster complete work .	1	JOB		
3	Brick work - Cement mortar 1:4 (1 cement : 4 coarse sand) with 1 st class bricks including racking out joints and curing complete as directed in all levels.	10	SQM		
4	P.C.C (1 : 4 : 8) ,Providing and laying 40 mm thick cement concrete floor 1:3:6 (1cement : 3 coarse sand : 6 graded stone aggregate 15 mm nominal size)including 15 mm thick cement plastering well rammed and consolidated and grouted with fine sand, including necessary levelling & dressing curing etc. all complete.	6	CUM		

5	<p>Granite - Providing and fixing 18 mm thick gang saw cut (a saw having several parallel blades making simultaneous cuts). mirror polished, moulded and polished, machine cut for basin platforms, approved shade, colour and texture laid over 20 mm thick base cement mortar 1:4 (1 cement : 4 coarse sand), joints treated with white cement, mixed with matching pigment, epoxy touch ups, including rubbing, curing, moulding and polishing to edges to give high gloss finish etc. complete at all levels. (a) Granite of black colour and shade. approximate size – (1m x 3 m) Granite Slab for Wash basin platform with skirting size with polished edges.</p>	3	SQM		
6	<p>R.C.C – Reinforced cement concrete work in slab (6” thickness) and reinforcement R.C.C- 1:1.5:3 (1 cement :1.5 coarse sand : 3 graded stone aggregate 20 mm. nominal size). Including centering and shuttering propping, curing complete.</p>	3	CUM		
7	<p>Polish on wooden Door - Applying one coat of primer and two coats of melamine polish /painting of approved quality and shade to have desired, finish to all exposed surface of teak wood member’s Main door with frame etc. including repairing door with preparing of surface by sand papering, applying putty etc. complete. Make – Asian, Berger .</p>	6	SQM		
8	<p>DOOR -Supply , fixing, installation Galvanized steel with PU paint doors Material: Infill: Honeycomb Core Shutter Thickness: 46mm, hutter: 0.8mm sheet thickness, Frame: 1.2mm sheet thickness size: Wall Opening(750 x 2100 mm) complete with all accessorize like - door lock , bolts, hinges necessary fittings. Make - , TATA PARVESH ,JSW Avante</p>	2	NOS		
9	<p>Plaster- Supply & Providing 12 mm thick average cement plaster to ceiling, walls., applied, finished smooth and cured, with mixes : 1:4 with fine sand.complete.</p>	100	SQM		

10	<p>Wall tiles - Supply & Providing and fixing Ist quality ceramic glazed wall tiles conforming to IS : 15622 (thickness to be specified by the manufacturer) of approved make in all colours , shades of any size any colour as approved on site skirting, risers of steps and dados over 12 mm thick bed of cement Mortar 1:3 (1 cement : 3 coarse sand) and jointing with grey cement slurry @ 3.3kg per sqm including pointing in white cement mixed with pigment of matching shade.</p> <p>Tiles Size- 300 x 600 mm for floor Make – Kajaria, Somany.</p>	90	SQM		
11	<p>Floor tiles - Providing Ceramic tiles with skirting of approved quality, shape and thickness not less than 8mm on floor, skirting over a cement mortar bed of 15 mm thick in prop 1:3 (1 cement: Coarse Sand) approved make fix with Fix-A-Tile (Choksey / Sika / Pedelite / Rouf) including pointing in white cement mixed with pigment of matching shade complete. Tiles Size- 600 x 600 mm for floor. Make – Kajaria, Somany</p>	50	SQM		
	SUB TOTAL - (A)				
B	Plumbing work				
1	<p>Wash Basin - wash basin and Providing and fixing table/ counter top wash basin with branded angle valve , connection pipe CP Brass Bottle trap, with CP Brass Screws & Nuts conforming to IS 2548-1967, with Standard waste coupling, and refinishing etc. including the following of standard pattern, filling of joints between wash basin and the granite etc. all necessary fittings complete.: Size of wash basin - 550x380 x 110 mm , Cat No. : S2020158, Make – Cera, Size: (565X425X140 mm) Cat No: KUS-WHF 35935, Make- Jaquar</p>	2	NOS		
2	<p>Single lever basin mixture - Providing and fixing single lever basin mixture CERA/ JAQUAR angle valve with 200mm Extension Body if required complete with necessary fittings. Approved Make: (Cera Cat noF1019452), (Hindware -Cat No. F360012CP)</p>	2	NOS		
3	<p>Health faucet -health faucet Providing and fixing Health Faucet with one-meter-long flexible tube & wall hook of approved make. Approved make- Cera, Jaquar</p>	2	NOS		

4	BIB COCK -Providing and fixing C.P. brass 2 way bib cock of approved quality conforming to IS standards complete.15 mm nominal bore. With all necessary fittings. Approved make: Jaguar/ Hindware	2	NOS		
5	Urinal -Providing and Fixing URINAL with connection pipe, bottle trap of CERA/ JAQUAR electrical sensor approved make (white color) with cistern down take pipe, concealed cock, all necessary fittings complete, (CERA Cat. No. S4010102), (JAQUAR :Urinal – URS-WHT-13255 SENSOR FLUSHING VALVE CODE- SNR-CHR 51097)	3	NOS		
6	WC- Providing and fixing in position Chinaware European type one piece water closet required P trap or S trap fixing in floor Making necessary fittings like connection pipe , angle valve complete.ISI marked, PVC short bend 32 mm diaWith all suitable size including cost of seat cover complete in all respect. Captor One Piece EWCs with Slim soft close seat cover. Approved Make: Cat No. : S1013205 (Cera Size: 655x345x750mm), (Jaguar Cat No. SLSWHT-68515300UF Size: 360x730x740 mm)	2	NOS		
7	Toilet paper holder - Providing and fixing Toilet Paper Holder with all necessary fittings complete. MAKE - CERA, HINDWARE	2	NOS		
8	Urinal glass partition: Supply & installation of 12mm thick frost finish toughened glass curved corners with smooth edge finish urinal partition with bottom SS frame support and fixed on wall using U clamp including all consumable, tools, tackles, labour etc. all complete. Size of glass - Size: 450 X 900mm. Make – Saint Gobain,	3	NOS		
9	CPVC Pipe - Providing and fixing (CPVC) pipes, having thermal stability for hot & cold water supply including all CPVC plain & brass threaded fittings, This includes jointing of pipes & fittings with one step CPVC solvent cement, trenching, refilling & testing of joints complete. 25 mm nominal outer dia Pipes 25mm. C.P.V.C pipes for distribution in toilets / pantry including chase cutting, chase filling. The rate shall include all accessories like tees, unions, elbows, bends, Ball valve, making a new connection in existing water line complete with all necessary fittings. required to				

	make the system operational & complete. the rate shall include all incidental work, cutting & making good walls & floors etc. Complete. CPVC PIPE 25MM (1") - Make - Astral, Supreme				
10	2" CPVC	20	RMT		
11	1" CPVC	10	RMT		
12	3/4" CPVC	12	RMT		
13	DRAINAGE PVC PIPE - Providing & fixing PVC pipes in position of required size with special fittings, S.S traps, bends, floor & nahani required at site making necessary connections with existing lines for w.c. & waste water lines, chambers to be constructed wherever necessary, unused lines for w.c. & waste water to be removed, the rate shall include all incidental work, cutting & making good walls & floors etc. Complete. Make - Astral, Supreme				
14	PVC PIPE 100 mm	30	RMT		
15	PVC PIPE 50 mm	10	RMT		
16	Window Glass with Aluminum channel - Providing and fixing aluminum windows (including frame, tubes, sections, shutter and handles) with sliding Clear glass panes of 4.0 mm thickness both left/Right Pane is Sliding with hinges pivots and necessary fittings. Making provision for fixing of fittings completed. wherever required. Colour- Pure White. Powder coated aluminum (minimum thickness of powder coating 50 micron). b) For shutters of windows 14 Gauge including providing and fixing hinges / pivots and making provision for fixing of fittings wherever required including the cost of EPDM rubber / neoprene gasket required. Powder coated aluminium (minimum thickness of powder coating 50 micron).	3	SQMT		
17	Glass Mirror - Supplying, fitting and fixing with glass mirror with S.S stud and necessary fitting complete, Beveled edged mirror 6 mm thick together with brass C.P. hinges SIZE – 7ft X 3ft Make – Saint Goblin, Modi Guard	1	nos.		

18	<p>Calcium Silicate Board - Providing & fixing false ceiling at all height including providing & fixing of framework made of special section, power pressed from M.S. sheets and galvanized with zinc coating of 120 gms/ sqm (both side inclusive) as per IS : 277 and consisting of angle cleat of size 25mm wide x 1.6mm thick with flanges of 27mm and 37mm, at 1200mm c/c, one flange fixed to the ceiling with dash fastener 12.5mm dia x 50mm long with 6mm dia bolts, other flange of cleat fixed to the angle hangers of 25 x10 x0.50mm of required length with nuts & bolts of required size and other end of angle hanger fixed with intermediate G.I channels 45 x15 x 0.90mm running at the spacing of 1200 mm c/c, to which the ceiling section 0.5mm thick bottom wedge of 80mm with tapered flanges of 26 mm each having lips of 10.5mm, at 450mm c/c, shall be fixed in a direction perpendicular to G.I intermediate channel with connecting clip made out of 2.64mm dia x 230mm long G.I wire at every junction, including fixing perimeter channels 0.50mm thick 27mm high having flanges of 20mm and 30mm long, the perimeter of ceiling fixed to wall/ partitions with the help of Rawl plugs at 450mm centre, with 25mm long dry wall screws @ 230mm interval, including fixing of Calcium Silicate Board to ceiling section and perimeter channels with the help of dry wall screws of size 3.5 x25mm at 230mm c/c, including jointing & finishing to a flush finish of tapered and square edges of the board with recommended jointing compounds, jointing tapes, finishing with jointing compounds in three layers covering up to 150mm on both sides of joints and two coats of primer suitable for boards, all as per manufacture's specification and also including the cost of making opening for light fittings, grills, diffusers, cut outs made with frame of perimeter channels suitably fixed. 8 mm thick Calcium Silicate Board made with Calcareous & Siliceous materials reinforced with cellulose fibre manufactured through autoclaving process.Make - ;USG BORAL / Aerolite Ceiling.</p>	35	sqmt	
----	--	----	------	--

	SUB TOTAL - (B)				
C	ELECTRICAL ITEM				
1	<p>SOAP DISPENCER - Providing and fixing of Soap Dispensers as per manufacture's specification screwed to wall with raw plugs and screws etc., complete all for operational condition Sensor Operation –Automatic Infra-Red Sensor(1) The Material of Soap Dispenser should be of Material – 304 Stainless Steel (2)The Soap Dispenser should have minimum capacity of 1100ML Make- EURONICS ES80A Wall Mount Hand Sanitizer Dispenser Silver Automatic Soap Dispenser With Matte Finish DSDR0112-S DOLPHY</p>	1	NOS		
2	<p>HAND DRYER - Providing and fixing of Hand Dryers as per manufacture's specification with all necessary fitting and fasteners etc. complete for operational condition to hold in position &orientation complete all, Note: The Body Material Should be of Stainless Steel 304.Power 1800W,RPM 23000 Make ; EURONICS, Model EH210N Make ; JAQUAR HDR-SSF-AK2807</p>	1	NOS		
3	<p>GYSER - Supply installation testing and commissioning of 10 LTR storage water geyser with connection pipes & angle valve and fasteners as required. Make - (V-GUARD-VICTO 5 star) (Havells – INSTANIO 10LTR 5 star Cat no- GHWAICTWGO10_)</p>	1	NOS		
4	<p>Supply installation testing and commissioning of LED Mirror lamp15W (Philips, Havells)</p>	1	NO		
5	<p>Supply installation testing and commissioning of 16 A combine socket with switch / metal box complete as required. Make; Honeywell, Havells</p>	4	NOS		

6	Supply installation testing and commissioning of four modular plate with 06A four switches GI box complete as required. Make ; Havells / MK	1	NO		
7	Supply installation testing and commissioning of concealed wiring for hand dryers ,geysers and power points including pvc conduit, metal sadels complete as required.(wiring used 4 sq mm two run for neutral/phase and 1.5 sq mm for earth) Make :Finolex, Havells	50	MTR		
8	Supply installation testing and commissioning of concealed wiring for LED lights. wiring used 1.5 sq mm two runs for neutral/phase including heavy duty conduit complete as required Make :Finolex, Havells,	50	MTR		
9	Supply, Installation, Testing and Commissioning of LED recessed Down lighter with LED Lights Fixation Fixture as required for mounting/installation on False Ceiling, with a nominal system lumen output of 1000 lumens and a minimum system efficacy of 110 lm/W. The luminaire shall have a rated system lifetime of 35,000 burning hours at L70B50. The luminaire should have a color temperature of 6500K and CRI>80. The luminaire shall meet IP20 rating with THD<20% and PF > 0.9. The luminaire housing should be made of pressure die cast aluminium and the luminaire optics shall have a high efficiency diffuser with more than 85% transmittance. The total power consumption should not exceed 9W (including driver). Driver efficiency should be >95%. BIS certification is required for LED Driver & Luminaire. Make ; HAVELLS,PHILIPS	3	NOS		

10	<p>False ceiling Lights - Supply, Installation, Testing and Commissioning of Recess LED 595x595mm fitting made of CRCA with fully covered by Polystyrene diffuser, LED Used shall be SMD type, LED Lights Fixation Fixture as required for mounting/installation on False Ceiling, and fixture should have minimum system lumen of 3000lm & minimum efficacy at System level ≥ 120 lumens/watt, Max power consumption 25W. Life of fixture : 50K Hrs. @ L70B50 Lumen maintenance, CCT of 6500K (SDCM80, ripple95%. BIS certification is required for LED Driver & Luminaire, Luminaire manufacture shall provide LM79 report from NABL accredited lab & LM80 report issued by LED manufacturer. Make; PHILIPS\ HAVEL</p>	2	NOS		
11	<p>G.I DUCT - Dismantling of existing duct and Supply, Design, installation, balancing and commissioning of fabricated at site GSS sheet metal rectangular ducting complete with neoprene rubber gaskets, elbows, splitter dampers, vanes, hangers, supports etc . sheet thickness completed as required as per specifications, Duct installation in shaft from ground floor to second floor terrace and given ventilation provision in every washroom rate should be included scaffolding, jhula, wall opening, repairing work of civil work etc. removing all scrap from site to scrap yard. Make; Tata, Jindal</p>				
A	Thickness 0.8 mm sheet-	55	SQ.MTR		
B	Thickness 0.63 mm sheet	25	SQ.MTR		
C	Supply installation testing and commissioning of G.I DAMPER required size complete as required .Make; Caryair, Waves	2	SQ.MTR		
D	Supply installation testing and commissioning of Extruded aluminum powder coated Exhaust Air	2	SQ.MTR		

	Diffusers with Black Matt Finish VCD complete as required. Make; Caryair, Waves				
12	SITC of axial fan 1600 CFM @ 40 MMWG,400 V including foundation with C channel, canvas connections complete as required. MAKE; KRUGER, GREENHECK (a) DOL starter, panel should accommodate with TPN, OLP, volt meter, ammeter, auto/manuel operation switch, Main power/ON,OFF indicating lamps, complete as required. Component Make; L&T, Schneider, Havells . panel should CPRI approved.	1	NOS		
13	Supply & Laying/ fixing of following size XLPE insulated and PVC sheathed Copper conductor armored cable as required of 1.1 KV grade complete as required. with all complete with saddles, thimble cable gland etc including effective proper connection to the equipment as required Make; Fhinox , Havells				
13.1	4C X 10 mm2	30	MTR		
13.2	4C X 2.5 mm2	30	MTR		
14	Galvanized iron profile sheets (Metro Sheet) -Supply & installation of percolated galvanized iron profile sheets (Metro Sheet) (size, shape and pitch of corrugation as approved at site) 0.50 mm +/- 5% total coated thickness (TCT) thick Zinc coating 120gsm as per IS: 277 in 240mpa steel grade, 5-7 microns' epoxy primer on both side of the sheet and polyester top coat 15- 18 microns. Sheet should have protective guard film of 25 microns minimum to avoid scratches while transportation and should be supplied in single length up to 12 meter. The sheet shall be fixed using self-drilling / self-tapping screws of size (5.5x 55mm) with EPDM seal or with polymer coated J or L hooks, bolts and nuts 8mm diameter with bitumen or with G.I. limpet washers filled with white lead complete upto any pitch in horizontal/ vertical or curved surfaces excluding the cost of purlins, rafters and trusses and including cutting to size and shape wherever required. MAKE - TATA, JINDAL	25	SQMT		

15	G.I SQUARE PIPE -Providing and fixing G.I Square (40X40x5mm) section frame work fixed. G.I square pipe on G.i sheet on shaft with dash fastener etc. complete as per manufacture specifications including necessary arrangements. MAKE – TATA, JINDAL	70	MTR		
	SUB TOTAL -C				
	GRAND TOTAL (A+B+C) ANNEXURE-1				

ANNEXURE-2

Name of Work: Renovation Washroom Ladies G.F Lab side Admin Block in ICGEB.

S.no	Description of item	Qty	Unit	Rate	Amount
A	CIVIL WORK				
1	Dismantling of Bathroom Fittings including Sanitary items, Faucets, Wash Basins, Closets/ Flush Cisterns, Urinals Aluminum window , doors etc. and stacking of useful material within a specified distance & disposal of unserviceable material.	1	JOB		
2	Dismantling of Brick, PCC, R.C.C & Any floor tiles and wall tiles including removing of door & windows cleaning and making the good with cement plaster complete work .	1	JOB		
3	Brick work - in Cement mortar 1:4 (1 cement : 4 coarse sand) with 1stclass bricks including racking out joints and curing complete as directed in all levels.	50	SQM		
4	P.C.C (1 : 4 : 8) ,Providing and laying 40 mm thick cement concrete floor 1:3:6 (1cement : 3 coarse sand : 6 graded stone aggregate 15 mm nominal size 50 mm thick bed of brick ballast well rammed and consolidated and grouted with fine sand, including necessary levelling & dressing curing etc. all complete.	6	CUM		

5	<p>Granite - Providing and fixing 18 mm thick gang saw cut (a saw having several parallel blades making simultaneous cuts).mirror polished, moulded and polished, machine cut for basin platforms, approved shade, colour and texture laid over 20 mm thick base cement mortar 1:4 (1 cement : 4 coarse sand), joints treated with white cement, mixed with matching pigment, epoxy touch ups, including rubbing, curing, moulding and polishing to edges to give high gloss finish etc. complete at all levels. (a) Granite of black colour and shade. approximate size – (1m x 3 m) Granite Slab for Wash basin platform with skirting size with polished edges.</p>	3	SQM		
6	<p>R.C.C – Reinforced cement concrete work in slab (6” thickness) and reinforcement R.C.C- 1:1.5:3 (1 cement :1.5 coarse sand : 3 graded stone aggregate 20 mm. nominal size). Including centering and shuttering propping, curing complete.</p>	2	CUM		
7	<p>Polish on wooden Door - Applying one coat of primer and two coats of melamine polish /painting of approved quality and shade to have desired, finish to all exposed surface of teak wood member’s Main door with frame etc. including repairing door with preparing of surface by sand papering, applying putty etc. complete. Make – Asian, Berger .</p>	6	SQM		
8	<p>DOOR -Supply , fixing, installation Galvanized steel with PU paint doors Material: Infill: Honeycomb Core Shutter Thickness: 46mm, hutter: 0.8mm sheet thickness,Frame: 1.2mm sheet thicknessize: Wall Opening(750 x 2100 mm) complete with all accessorize like - door lock Make - TATA PARVESH ,JSW Avante</p>	7	NOS		
9	<p>Plaster- Providing 12 mm thick average cement plaster to ceiling, walls., applied, finished smooth and cured, complete, with mixes : 1:4 with fine sand.</p>	100	SQM		

10	Wall tiles - Supply & Providing and fixing Ist quality ceramic glazed wall tiles conforming to IS : 15622 (thickness to be specified by the manufacturer) of approved make in all colors as approved on site skirting, risers of steps and dados over 12mm thick bed of cement Mortar 1:3 (1 cement : 3 coarse sand) and jointing with grey cement slurry @ 3.3kg per sqm including pointing in white cement mixed with pigment of matching shade. Tiles Size- 300 x 600 mm for floor Make – Kajaria, Somany.	100	SQM		
11	Floor tiles - Providing Ceramic tiles with skirting of approved quality, shape and thickness not less than 8mm on floor, skirting over a cement mortar bed of 15 mm thick in prop 1:3 (1 cement : Coarse Sand) approved make fix with Fix-A-Tile (Choksey / Sika / Pedelite / Rouf) including pointing in white cement mixed with pigment of matching shade complete. Tiles Size- 600 x 600 mm for floor. Make -Kajaria, Somany	55	SQM		
	SUB TOTAL -(A)				
B	Plumbing work				
1	Wash Basin - wash basin and Providing and fixing table/ counter top wash basin with branded angle valve , connection pipe CP Brass Bottle trap, with CP Brass Screws & Nuts conforming to IS 2548-1967, with Standard waste coupling, and refinishing etc. including the following of standard pattern, filling of joints between wash basin and the granite etc. all necessary fittings complete.: Size of wash basin - 550x380 x 110 mm , Cat No. : S2020158, Make – Cera, Size: (565X425X140 mm) Cat No: KUS-WHF 35935, Make- Jaquar	3	NOS		
2	Single lever basin mixture - Providing and fixing single lever basin mixture branded including angle valve , connection pipe with 200mm Extension Body if required complete with necessary fittings . Approved Make: (Cera Cat noF1019452), (Hindware -Cat No. F360012CP)	3	NOS		
3	Health faucet -health faucet Providing and fixing Health Faucet with one meter long flexible tube & wall hook of approved make. Approved make- Cera, Jaquar	6	NOS		
4	BIB COCK -Providing and fixing C.P. brass 2 way bib cock of approved quality conforming to IS standards complete.15 mm nominal bore. Approved make: Jaquar/ Cera	6	NOS		

5	WC- Providing and fixing in position Chinaware European type one piece water closet required P trap or S trap fixing in floor Making necessary fittings like connection pipe , angle valve complete.ISI marked, PVC short bend 32 mm diaWith all suitable size including cost of seat cover complete in all respect. Captor One Piece EWCs with Slim soft close seat cover. Approved Make: Cat No. : S1013205 (Cera Size: 655x345x750mm), (Jaguar Cat No. SLSWHT-68515300UF Size: 360x730x740 mm)	6	NOS		
6	Toilet paper holder - Providing and fixing Toilet Paper Holder with all necessary fittings complete. MAKE - CERA, HINDWARE	6	NOS		
7	CPVC Pipe - Providing and fixing (CPVC) pipes, having thermal stability for hot & cold water supply including all CPVC plain & brass threaded fittings This includes jointing of pipes & fittings with one step CPVC solvent cement ,trenching ,refilling & testing of joints complete as per direction of Engineer in Charge. 25 mm nominal outer dia Pipes 25mm. C.P.V.C pipes for distribution in toilets / pantry including chase cutting, chase filling. The rate shall include all accessories like tees, unions, elbows, bends, Ball valve, making a new connection in existing water line etc. required to make the system operational & complete. the rate shall include all incidental work, cutting & making good walls & floors etc. Complete. CPVC PIPE 25MM (1") - Make - Astral, Supreme .				
7.1	2" CPVC	20	RMT		
7.2	1" CPVC	20	RMT		
7.3	3/4" CPVC	70	RMT		
8	DRAINAGE PVC PIPE - Providing & fixing 2"dia PVC pipes in position of required size with special fittings, S.S traps, bends, floor & nahani required at site making necessary connections with existing lines for w.c. & waste water lines, chambers to be constructed wherever necessary, unused lines for w.c. & waste water to be removed, the rate shall include all incidental work, cutting & making good walls & floors etc Complete. .Make - Astral, Supreme				
8.1	PVC PIPE 100 mm	82	Rmt		
8.2	PVC PIPE 50 mm -	25	Rmt		

9	<p>Window Glass with Aluminum channel - Providing and fixing aluminum windows (including frame, tubes, sections, shutter and handles) with sliding Clear glass panes of 4.0 mm thickness both left/Right Pane is Sliding with hinges pivots and necessary fittings. Making provision for fixing of fittings completed. wherever required. Colour- Pure White.</p> <p>Powder coated aluminum (minimum thickness of powder coating 50 micron). b) For shutters of windows 14 Gauge including providing and fixing hinges / pivots and making provision for fixing of fittings wherever required including the cost of EPDM rubber / neoprene gasket required. Powder coated aluminum (minimum thickness of powder coating 50 micron).</p>	4	Sqmt		
10	<p>Glass Mirror - Supplying, fitting and fixing with glass mirror with S.S stud and necessary fitting complete, Beveled edged mirror 6 mm thick together with brass C.P. hinges completed.</p> <p>Make – Saint Goblin, Modi Guard.</p>	2	nos.		

11	<p>Calcium Silicate Board - Providing & fixing false ceiling at all height including providing & fixing of framework made of special section, power pressed from M.S. sheets and galvanized with zinc coating of 120 gms/ sqm (both side inclusive) as per IS : 277 and consisting of angle cleat of size 25mm wide x 1.6mm thick with flanges of 27mm and 37mm, at 1200mm c/c, one flange fixed to the ceiling with dash fastener 12.5mm dia x 50mm long with 6mm dia bolts, other flange of cleat fixed to the angle hangers of 25 x10 x0.50mm of required length with nuts & bolts of required size and other end of angle hanger fixed with intermediate G.I chanel 45 x15 x 0.90mm running at the spacing of 1200 mm c/c, to which the ceiling section 0.5mm thick bottom wedge of 80mm with tapered flanges of 26 mm each having lips of 10.5mm, at 450mm c/c, shall be fixed in a direction perpendicular to G.I intermediate channel with connecting clip made out of 2.64mm dia x 230mm long G.I wire at every junction, including fixing perimeter channels 0.50mm thick 27mm high having flanges of 20mm and 30mm long, the perimeter of ceiling fixed to wall/ partitions with the help of Rawl plugs at 450mm centre, with 25mm long dry wall screws @ 230mm interval, including fixing of Calcium Silicate Board to ceiling section and perimeter channels with the help of dry wall screws of size 3.5 x25mm at 230mm c/c, including jointing & finishing to a flush finish of tapered and square edges of the board with recommended jointing compounds, jointing tapes, finishing with jointing compounds in three layers covering up to 150mm on both sides of joints and two coats of primer suitable for boards, all as per manufacture's specification and also including the cost of making opening for light fittings, grills, diffusers, cut outs made with frame of perimeter channels suitably fixed. 8 mm thick Calcium Silicate Board made with Calcareous & Siliceous materials reinforced with cellulose fibre manufactured through autoclaving process. Make - ;USG BORAL / Aerolite Ceiling.</p>	41	sqmt		
	SUB TOTAL -(B)				
C	ELECTRICAL ITEM				

1	<p>SOAP DISPENCER - Providing and fixing of Soap Dispensers as per manufacture's specification screwed to wall with raw plugs and screws etc., complete all for operational condition Sensor Operation –Automatic Infra-Red Sensor(1) The Material of Soap Dispenser should be of Material – 304 Stainless Steel (2)The Soap Dispenser should have minimum capacity of 1100ML Make- EURONICS E ES80A Wall Mount Hand Sanitizer Dispenser Silver Automatic Soap Dispenser With Matte Finish DSDR0112-S DOLPHY</p>	1	NOS		
2	<p>HAND DRYER - Providing and fixing of Hand Dryers as per manufacture's specification with all necessary fitting and fasteners etc.omplete for operational condition to hold in position &orientation complete all, Note: The Body Material Should be of Stainless Steel 304.Power 1800W,RPM 23000 Make ; EURONICS, Model EH210N Make ; JAQUAR HDR-SSF-AK2807</p>	1	NOS		
3	<p>GYSER - Supply installation testing and commissioning of 10 LTR storage water geyser with connection pipes & angle valve and fasteners as required. Make - (V-GUARD-VICTO 5 star) (Havells – INSTANIO 10LTR 5 star Cat no- GHWAICTWGO10_)</p>	1	NOS		
4	<p>Supply installation testing and commissioning of LED Mirror lamp15W (Philips, Havells)</p>	1	NO		
5	<p>Supply installation testing and commissioning of 16 A combine socket with switch / metal box complete as required. Make; Honeywell, Havells</p>	4	NOS		
6	<p>Supply installation testing and commissioning of six modular plate with 06A six switches GI box complete as required. Make ; Havells / MK</p>	1	NO		
7	<p>Supply installation testing and commissioning of concealed wiring for hand dryers ,geysers and power points including pvc conduit, metal sadels complete as required.(wiring used 4 sq mm two run for neutral/phase and 1.5 sq mm for earth) Make :Finolex, Havells</p>	50	MTR		

8	Supply installation testing and commissioning of concealed wiring for LED lights. wiring used 1.5 sq mm two runs for neutral/phase including heavy duty conduit complete as required Make :Finolex, Havells,	50	MTR		
9	Supply, Installation, Testing and Commissioning of LED recessed Down lighter with LED Lights Fixation Fixture as required for mounting/installation on False Ceiling, with a nominal system lumen output of 1000 lumens and a minimum system efficacy of 110 lm/W. The luminaire shall have a rated system lifetime of 35,000 burning hours at L70B50. The luminaire should have a color temperature of 6500K and CRI>80. The luminaire shall meet IP20 rating with THD<20% and PF > 0.9. The luminaire housing should be made of pressure die cast aluminium and the luminaire optics shall have a high efficiency diffuser with more than 85% transmittance. The total power consumption should not exceed 9W (including driver). Driver efficiency should be >95%. BIS certification is required for LED Driver & Luminaire. Make ; HAVELLS,PHILIPS.	5	NO		
10	False ceiling Lights - Supply, Installation, Testing and Commissioning of Recess LED 595x595mm fitting made of CRCA with fully covered by Polystyrene diffuser, LED Used shall be SMD type, LED Lights Fixation Fixture as required for mounting/installation on False Ceiling, and fixture should have minimum system lumen of 3000lm & minimum efficacy at System level ≥ 120 lumens/watt, Max power consumption 25W . Life of fixture: 50K Hrs. @ L70B50 Lumen maintenance, CCT of 6500K (SDCM80, ripple95%. BIS certification is required for LED Driver & Luminaire, Luminaire manufacture shall provide LM79 report from NABL accredited lab & LM80 report issued by LED manufacturer. Make; PHILIPS\ HAVELLS	4	NO		

11	G.I DUCT - Dismantling of existing duct and Supply, Design, installation, balancing and commissioning of fabricated at site GSS sheet metal rectangular ducting complete with neoprene rubber gaskets, elbows, splitter dampers, vanes, hangers, supports etc . sheet thickness completed as required as per specifications, Duct installation in shaft from ground floor to second floor terrace and given ventilation provision in every washroom rate should be included scaffolding, jhula, wall opening, repairing work of civil work etc. removing all scrap from site to scrap yard Make; Tata, Jindal				
A	Thickness 0.8 mm sheet-	55	Sq Mtr		
B	Thickness 0.63 mm sheet	25	Sq Mtr		
C	Supply installation testing and commissioning of G.I DAMPER required size complete as required . Make; Caryair, Waves	3	Sq Mtr		
D	Supply installation testing and commissioning of Extruded aluminum powder coated Exhaust Air Diffusers with Black Matt Finish VCD complete as required. Make; Caryair, Waves	3	Sq Mtr		
12	SITC of axial fan 1600 CFM @ 40 MMWG,400 V including foundation with C channel, canvas connections complete as required. MAKE; KRUGER, GREENHECK (a) DOL starter, panel should accommodate with TPN, OLP, volt meter, ammeter, auto/manuel operation switch, Main power/ON, OFF indicating lamps, complete as required. Component Make; L&T, Schneider, Havells . panel should CPRI approved.	1	NOS		
13	Supply & Laying/ fixing of following size XLPE insulated and PVC sheathed Copper conductor armored cable as required of 1.1 KV grade complete as required. with all complete with saddles, thimble cable gland etc including effective proper connection to the equipment as required Make; Fhinolex , Havells				
a	4C X 2.5 mm2	30	Mtr		
	Sub Total ©				
	GRAND TOTAL (A+B+C) ANNEXURE-2				

ANNEXURE-3

Name of Work: RENOVATION OF EXTENDED WASHROOM LAB SIDE 1ST FLOOR

S.no	Description of work	QTY	Unit	rate	Amount
A	CIVIL WORK				
1	Dismantling of Bathroom Fittings including Sanitary items, Faucets, Wash Basins, Closets/ Flush Cisterns, Urinals Aluminum window, doors etc. and stacking of useful material within a specified distance & disposal of unserviceable material.	1	JOB		
2	Dismantling of Brick, PCC, R.C.C & Any floor tiles and wall tiles including removing of door & windows cleaning and making the good with cement plaster complete work.	1	JOB		
3	Brick work - Cement mortar 1:4 (1 cement : 4 coarse sand) with 1 st class bricks including racking out joints and curing complete as directed in all levels	5	SQM		
4	P.C.C (1 : 4 : 8) ,Providing and laying 40 mm thick cement concrete floor 1:3:6 (1cement : 3 coarse sand : 6 graded stone aggregate 15 mm nominal size)including 15 mm thick cement plastering well rammed and consolidated and grouted with fine sand, including necessary levelling & dressing curing etc. all complete.	2	CUM		
5	Granite - Providing and fixing 18 mm thick gang saw cut (a saw having several parallel blades making simultaneous cuts).mirror polished, molded and polished, machine cut for basin platforms, approved shade, color and texture laid over 20 mm thick base cement mortar 1:4 (1 cement : 4 coarse sand), joints treated with white cement, mixed with matching pigment, epoxy touch ups, including rubbing, curing, molding and polishing to edges to give high gloss finish etc. complete at all levels. (a) Granite of black color and shade. approximate size – (1m x 3 m) Granite Slab for Wash basin platform with skirting size with polished edges.	1	SQM		

6	R.C.C – Reinforced cement concrete work in slab (6” thickness) and reinforcement R.C.C- 1:1.5:3 (1 cement :1.5 coarse sand: 3 graded stone aggregate 20 mm. nominal size). centering and shuttering including strutting, propping etc. and removal of form work for slab .	1	CUM		
7	Polish on wooden Door - Applying one coat of primer and two coats of melamine polish /painting of approved quality and shade to have desired, finish to all exposed surface of teak wood member’s Main door with frame etc. including repairing door with preparing of surface by sand papering, applying putty etc. complete. Make – Asian, Berger .	6	SQM		
8	DOOR -Supply , fixing, installation Galvanized steel with PU paint doors Material: Infill: Honeycomb Core Shutter Thickness: 46mm, hutter: 0.8mm sheet thickness, Frame: 1.2mm sheet thickness size: Wall Opening(750 x 2100 mm) complete with all accessorize like - door lock Make - , TATA PARVESH, JSW Avante	2	NOS		
9	Plaster - Providing 12 mm thick average cement plaster to ceiling, walls., applied, finished smooth and cured, complete, with mixes : 1:4 with fine sand.	40	SQM		
10	Wall tiles - Supply & Providing and fixing Ist quality ceramic glazed wall tiles conforming to IS : 15622 (thickness to be specified by the manufacturer) of approved make in all colours , shades of any size any colour as approved on site skirting, risers of steps and dados over 12 mm thick bed of cement Mortar 1:3 (1 cement : 3 coarse sand) and jointing with grey cement slurry @ 3.3kg per sqm including pointing in white cement mixed with pigment of matching shade. Tiles Size- 300 x 600 mm for floor	40	SQM		

11	Floor tiles - Providing Ceramic tiles with skirting of approved quality, shape and thickness not less than 8mm on floor, skirting over a cement mortar bed of 15 mm thick in prop 1:3 (1 cement: Coarse Sand) approved make fix with Fix-A-Tile (Choksey / Sika / Pedelite / Rouf) including pointing in white cement mixed with pigment of matching shade complete. Tiles Size- 600 x 600 mm for floor	12	SQM		
	SUB TOTAL- (A)				
B	Plumbing work				
1	Wash Basin - wash basin and Providing and fixing table/ counter top wash basin with branded angle valve , connection pipe CP Brass Bottle trap, with CP Brass Screws & Nuts conforming to IS 2548-1967, with Standard waste coupling, and refinishing etc. including the following of standard pattern, filling of joints between wash basin and the granite etc. all necessary fittings complete.: Size of wash basin - 550x380 x 110 mm , Cat No. : S2020158, Make – Cera, Size: (565X425X140 mm) Cat No: KUS-WHF 35935, Make- Jaquar	2	NOS		
2	Single lever basin mixture - Providing and fixing single lever basin mixture branded angle valve, connection pipe with 200mm Extension Body if required complete with necessary fittings. Approved Make: (Cera Cat noF1019452), (Hindware - Cat No. F360012CP)	2	NOS		
3	Health faucet -health faucet Providing and fixing Health Faucet with one-meter-long flexible tube & wall hook of approved make. Approved make- Cera, Jaquar	2	NOS		
4	BIB COCK -Providing and fixing C.P. brass 2 way bib cock of approved quality conforming to IS standards complete.15 mm nominal bore. Approved make: Jaguar/ Hindware	2	NOS		

5	<p>WC- Providing and fixing in position Chinaware European type one piece water closet required P trap or S trap fixing in floor Making necessary fittings like connection pipe, angle valve complete .ISI marked, PVC short bend 32 mm dia With all suitable size including cost of seat cover complete in all respect.</p> <p>Captor One Piece EWCs with Slim soft close seat cover. Approved Make: Cat No. : S1013205 (Cera Size: 655x345x750mm), (Jaguar Cat No. SLSWHT-68515300UF Size: 360x730x740 mm)</p>	2	NOS		
6	<p>Toilet paper holder - Providing and fixing Toilet Paper Holder with all necessary fittings complete.</p> <p>MAKE - CERA, HINDWARE</p>	2	NOS		
7	<p>CPVC Pipe - Providing and fixing (CPVC) pipes, having thermal stability for hot & cold water supply including all CPVC plain & brass threaded fittings This includes jointing of pipes & fittings with one step CPVC solvent cement ,trenching ,refilling & testing of joints complete as per direction of Engineer in Charge. 25 mm nominal outer dia Pipes 25mm. C.P.V.C pipes for distribution in toilets / pantry including chase cutting, chase filling. The rate shall include all accessories like tees, unions, elbows, bends, Ball valve, Making a new connection in existing water line etc. required to make the system operational & complete. the rate shall include all incidental work, cutting & making good walls & floors etc. Complete. CPVC PIPE 25MM (1") - Make - Astral, Supreme</p>				
7.1	2" CPVC	10	RMT		
7.2	1" CPVC	10	RMT		
7.3	3/4" CPVC	12	RMT		
8	<p>DRAINAGE PVC PIPE - Providing & fixing 2”dia PVC pipes of supreme/prince make or equivalent in position of required size with special fittings, S.S traps, bends, floor & nahani required at site making necessary connections with existing lines for w.c. & waste water lines, chambers to be constructed wherever necessary, unused lines for w.c. & waste water to be removed, the rate shall include all incidental work, cutting & making good walls & floors etc. Complete. Make - Astral, Supreme</p>				
8.1	PVC PIPE 100 mm	10	RMT		
8.2	PVC PIPE 50 mm -	20	RMT		

9	<p>Window Glass with Aluminum channel - Providing and fixing aluminum windows (including frame, tubes, sections, shutter and handles) with sliding Clear glass panes of 4.0 mm thickness both left/Right Pane is Sliding with hinges pivots and necessary fittings. Making provision for fixing of fittings completed. wherever required.</p> <p>Colour- Pure White.</p> <p>Powder coated aluminum (minimum thickness of powder coating 50 micron). b) For shutters of windows 14 Gauge including providing and fixing hinges / pivots and making provision for fixing of fittings wherever required including the cost of EPDM rubber / neoprene gasket required. Powder coated aluminium (minimum thickness of powder coating 50 micron).</p> <p>Make -Tata, Jindal</p>	3	SQMT		
10	<p>Glass Mirror - Supplying, fitting and fixing with glass mirror with S.S stud and necessary fitting complete, Beveled edged mirror 6 mm thick together with brass C.P. hinges SIZE – 7ft X 3ft Make - Saint gobin, modiguard</p>	1	nos.		

11	<p>Calcium Silicate Board - Providing & fixing false ceiling at all height including providing & fixing of framework made of special section, power pressed from M.S. sheets and galvanized with zinc coating of 120 gms/ sqm (both side inclusive) as per IS : 277 and consisting of angle cleat of size 25mm wide x 1.6mm thick with flanges of 27mm and 37mm, at 1200mm c/c, one flange fixed to the ceiling with dash fastener 12.5mm dia x 50mm long with 6mm dia bolts, other flange of cleat fixed to the angle hangers of 25 x10 x0.50mm of required length with nuts & bolts of required size and other end of angle hanger fixed with intermediate G.I chanel 45 x15 x 0.90mm running at the spacing of 1200 mm c/c, to which the ceiling section 0.5mm thick bottom wedge of 80mm with tapered flanges of 26 mm each having lips of 10.5mm, at 450mm c/c, shall be fixed in a direction perpendicular to G.I intermediate channel with connecting clip made out of 2.64mm dia x 230mm long G.I wire at every junction, including fixing perimeter channels 0.50mm thick 27mm high having flanges of 20mm and 30mm long, the perimeter of ceiling fixed to wall/ partitions with the help of Rawl plugs at 450mm centre, with 25mm long dry wall screws @ 230mm interval, including fixing of Calcium Silicate Board to ceiling section and perimeter channels with the help of dry wall screws of size 3.5 x25mm at 230mm c/c, including jointing & finishing to a flush finish of tapered and square edges of the board with recommended jointing compounds, jointing tapes, finishing with jointing compounds in three layers covering up to 150mm on both sides of joints and two coats of primer suitable for boards, all as per manufacture's specification and also including the cost of making opening for light fittings, grills, diffusers, cut outs made with frame of perimeter channels suitably fixed. 8 mm thick Calcium Silicate Board made with Calcareous & Siliceous materials reinforced with cellulose fiber manufactured through autoclaving process. Make - ;USG BORAL / Aerolite Ceiling.</p>	30	sqmt		
	SUB TOTAL- (B)				
C	ELECTRICAL ITEM				

1	SOAP DISPENCER - Providing and fixing of Soap Dispensers as per manufacture's specification screwed to wall with raw plugs and screws etc., complete all for operational condition Sensor Operation –Automatic Infra-Red Sensor(1) The Material of Soap Dispenser should be of Material – 304 Stainless Steel (2)The Soap Dispenser should have minimum capacity of 1100ML Make- EURONICS ES80A Wall Mount Hand Sanitizer Dispenser Silver Automatic Soap Dispenser With Matte Finish DSDR0112-S DOLPHY	1	NOS		
2	HAND DRYER - Providing and fixing of Hand Dryers as per manufacture's specification with all necessary fitting and fasteners etc. Complete for operational condition to hold in position &orientation complete all, Note: The Body Material Should be of Stainless Steel 304.Power 1800W, RPM 23000 Make ; EURONICS, Model EH210N Make ; JAQUAR HDR-SSF-AK2807	1	NOS		
3	GYSER - Supply installation testing and commissioning of 10 LTR storage water geyser with connection pipes angle valve and fasteners as required. Make - (V-GUARD-VICTO 5 star) (Havells – INSTANIO 10LTR 5 star Cat no- GHWAICTWGO10_)	1	NOS		
4	Supply installation testing and commissioning of LED Mirror lamp15W Make -(Philips, Havells)	1	NOS		
5	Supply installation testing and commissioning of 16 A combine socket with switch / metal box complete as required. Make; Honeywell, Havells	4	NOS		
6	Supply installation testing and commissioning of Six module plate with 06A six switches GI box complete as required. Make ; Honeywell, Havells	1	NOS		
7	Supply installation testing and commissioning of concealed wiring For LED lights. wiring used 1.5 sq mm two runs for neutral/phase including heavy duty conduit complete as required Make :Finolex, Havells,	50	MTR		
8	Supply installation testing and commissioning of concealed wiring for hand dryers ,geysers and power points including pvc conduit, metal sadels complete as required.(wiring used 4 sq mm two run for neutral/phase and 1.5 sq mm for earth) Make :Finolex, Havells	50	MTR		

9	Supply, Installation, Testing and Commissioning of LED recessed Down lighter with LED Lights Fixation Fixture as required for mounting/installation on False Ceiling, with a nominal system lumen output of 1000 lumens and a minimum system efficacy of 110 lm/W. The luminaire shall have a rated system lifetime of 35,000 burning hours at L70B50. The luminaire should have a color temperature of 6500K and CRI>80. The luminaire shall meet IP20 rating with THD<20% and PF > 0.9. The luminaire housing should be made of pressure die cast aluminium and the luminaire optics shall have a high efficiency diffuser with more than 85% transmittance. The total power consumption should not exceed 9W (including driver). Driver efficiency should be >95%. BIS certification is required for LED Driver & Luminaire. Make ;PHILIPS, HAVELLS.	3	NOS		
10	False ceiling Lights - Supply, Installation, Testing and Commissioning of Recess LED 595x595mm fitting made of CRCA with fully covered by Polystyrene diffuser, LED Used shall be SMD type, LED Lights Fixation Fixture as required for mounting/installation on False Ceiling, and fixture should have minimum system lumen of 3000lm & minimum efficacy at System level >=120lumens/watt, Max power consumption 25W. Life of fixture: 50K Hrs. @ L70B50 Lumen maintenance, CCT of 6500K (SDCM80, ripple95%. BIS certification is required for LED Driver & Luminaire, Luminaire manufacture shall provide LM79 report from NABL accredited lab & LM80 report issued by LED manufacturer. . . Make; PHILIPS\ HAVELLS	2	NOS		
11	G.I DUCT - Supply, Design, installation, balancing and commissioning of fabricated at site GSS sheet metal rectangular ducting complete with neoprene rubber gaskets, elbows, splitter dampers, vanes, hangers, supports etc. sheet thickness completed as required as per specifications, MAKE;TATA,JINDAL.				
a	Thickness 0.63 mm sheet-	10	SQ.MTR		
b	Supply installation testing and commissioning of Extruded aluminum powder coated Exhaust Air Diffusers with Black Matt Finish VCD complete as required. Make; Caryair, Waves	2	SQ.MTR		
12	SITC of Duct able exhaust fan Suitable CFM,220 V, Canvas connections, fittings complete as required. Make; Havells, Crompton.	1	NO		
	Sub Total ©	127			
	GRAND TOTAL (A+B+C) ANNEXURE-3				

All ANNEXURES AMOUNT		
S. No.	Description	Amount
1.	ANNEXURE-1 GRAND TOTAL AMOUNT	
2.	ANNEXURE-2 GRAND TOTAL AMOUNT	
3.	ANNEXURE-3 GRAND TOTAL AMOUNT	
4.	TOTAL (S. No. 1+2+3)	
5.	GST	
6.	GRAND TOTAL (S. No. 4+5)	

Note: -

1. Abnormally low and high bid will not be entertained.
2. GST should be mentioned separately.
3. Before quoting the rates, the Contractors should inspect the works at campus of ICGEB.
4. Fill the price bid in Excel format.

Authorised Signatory
Name & Address of the firm with seal